

# Non Print Legal Deposit Avoiding the black hole

From Regulation to Review.....and Beyond

Linda Arnold-Stratford  
Legal Deposit Libraries Liaison manager  
The British Library







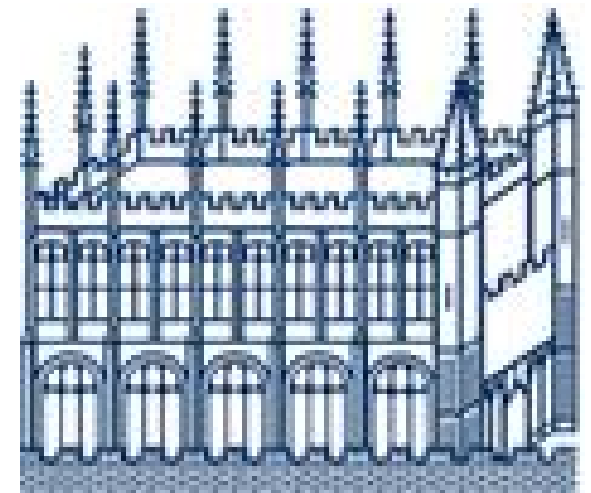
The British Library  
- London  
- Yorkshire





# The Bodleian Library Oxford

- The main research library of Oxford University
- A collection of 29 Libraries.
- The largest legal deposit Library after the British Library







## Cambridge University Library

- The main research Library of The University of Cambridge
- Holds approximately 8 million items



## Trinity College Library Dublin

- Became a legal deposit Library in 1911
- Retained status as a Legal deposit Library after independence in 1921
- Largest Library in Ireland







## The National Library of Scotland

- Two locations Edinburgh and Glasgow
- Holds over 24 million items
- Also linked to the Faculty of Advocates





## National Library of Wales

- Two locations Aberystwyth and Cardiff
- Largest Library in Wales
- Over 6.5 million items









# Where has NPLD come from?

The legal deposit act 2003 includes non-print works



Ten years later in April 2013 the regulations come into force

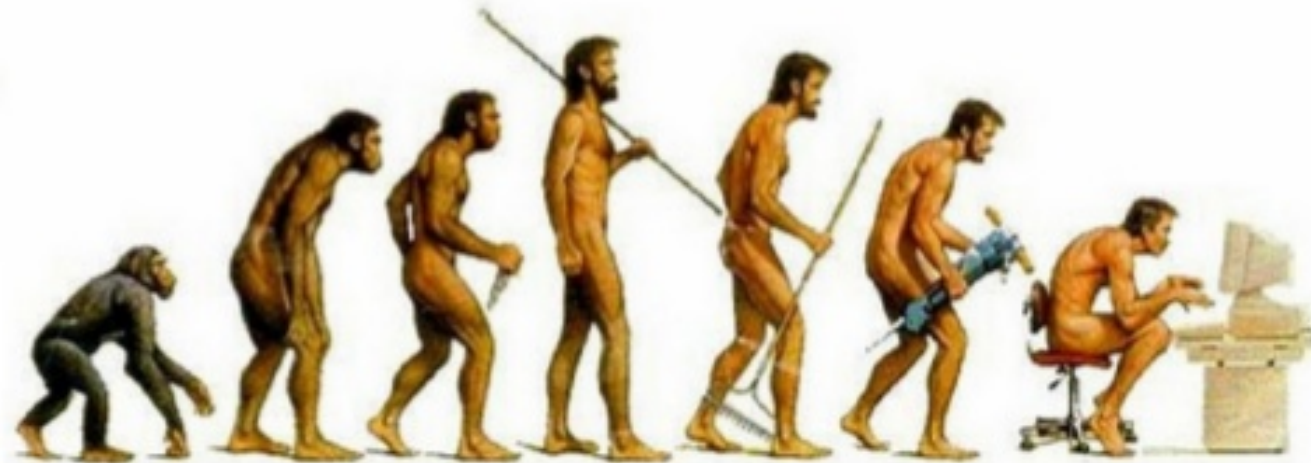




# The Content Explosion

“Every two days we create as much content as from the dawn of man up to the year 2003.”

- Eric Schmidt, Google, in 2010







# Key purpose of the regulations

- To ensure a national collection of non-print publications;
- To enable an efficient system in which material is archived and preserved in the legal deposit libraries;
- To govern how the deposited copies may be used, balancing the needs of libraries and researchers with the interests of publishers and right holders;
- To facilitate long-term preservation, so that the material may continue to be accessed in future; and
- To ensure long-term viability by requiring both legal deposit libraries and publishers to share the responsibility for archiving without imposing an unreasonable burden on any institution





# What is in Scope for NPLD

**eJournals**

CD Rom

**eBooks**

**Born digital sheet music**

DVD or Microform

**Digital Mapping**

**Official publications**

**Websites**

# What are the restrictions to use of NPLD

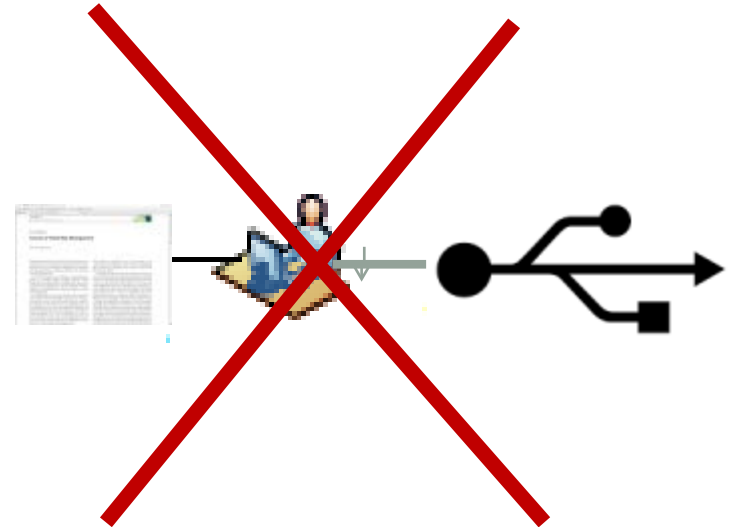
- Single concurrent access per item per Library





# What are the restrictions to use of NPLD

- Single concurrent access per item per Library
- No digital copies are to be removed from the reading room, No digital sharing or screen shots



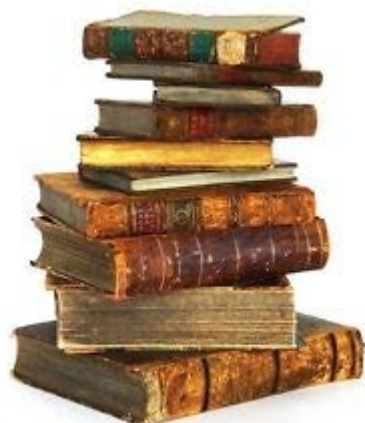
# What are the restrictions to use of NPLD

- Single concurrent access per item per Library
- No digital copies are to be removed from the reading room, No digital sharing or screen shots
- Cannot use it for interlibrary loan unless it is between one legal deposit library and another
- Cannot Text data mine
- Can only access content on Library terminals



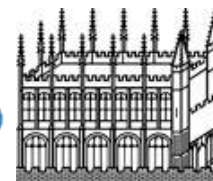
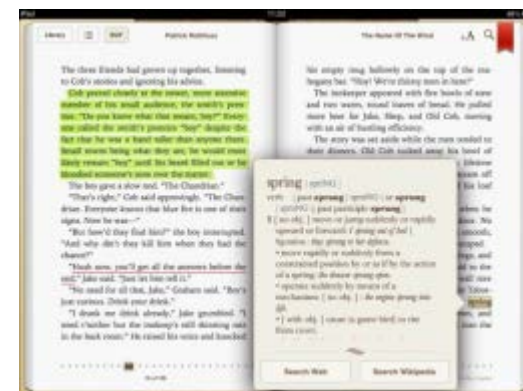


# What have we achieved so far?



Legal deposit for print has been in force for over 400 years, we still have problems collecting and processing that material.

In just 4 years we have achieved access to content which can be very complex, be in diverse formats and is forever changing.







# Ingest, Metadata, Access and Printing

- We can ingest eJournals and eBooks from a variety of sources.
- We can harvest and allow access to websites
- Metadata can be harvested from the BL by all legal deposit Libraries.
- Each LDL now has the ability to access eJournals, eBooks and Web Archive.
- Currently different levels of access and printing is available across the LDLs dependent upon local infrastructure.



# How do we do that?



Deposit with British Library (Boston Spa)

Content shared and distributed to four nodes:

- Boston Spa
- St Pancras
- Aberystwyth
- Edinburgh

Access at each node, and by secure network for

- CUL
- Bodleian
- TCD



# How do we do that?



Deposit with British Library (Boston Spa)

Content shared and distributed to four nodes:

- Boston Spa
- St Pancras
- Aberystwyth
- Edinburgh

Access at each node, and by secure network for

- CUL
- Bodleian
- TCD

# How do we do that?



Deposit with British Library (Boston Spa)

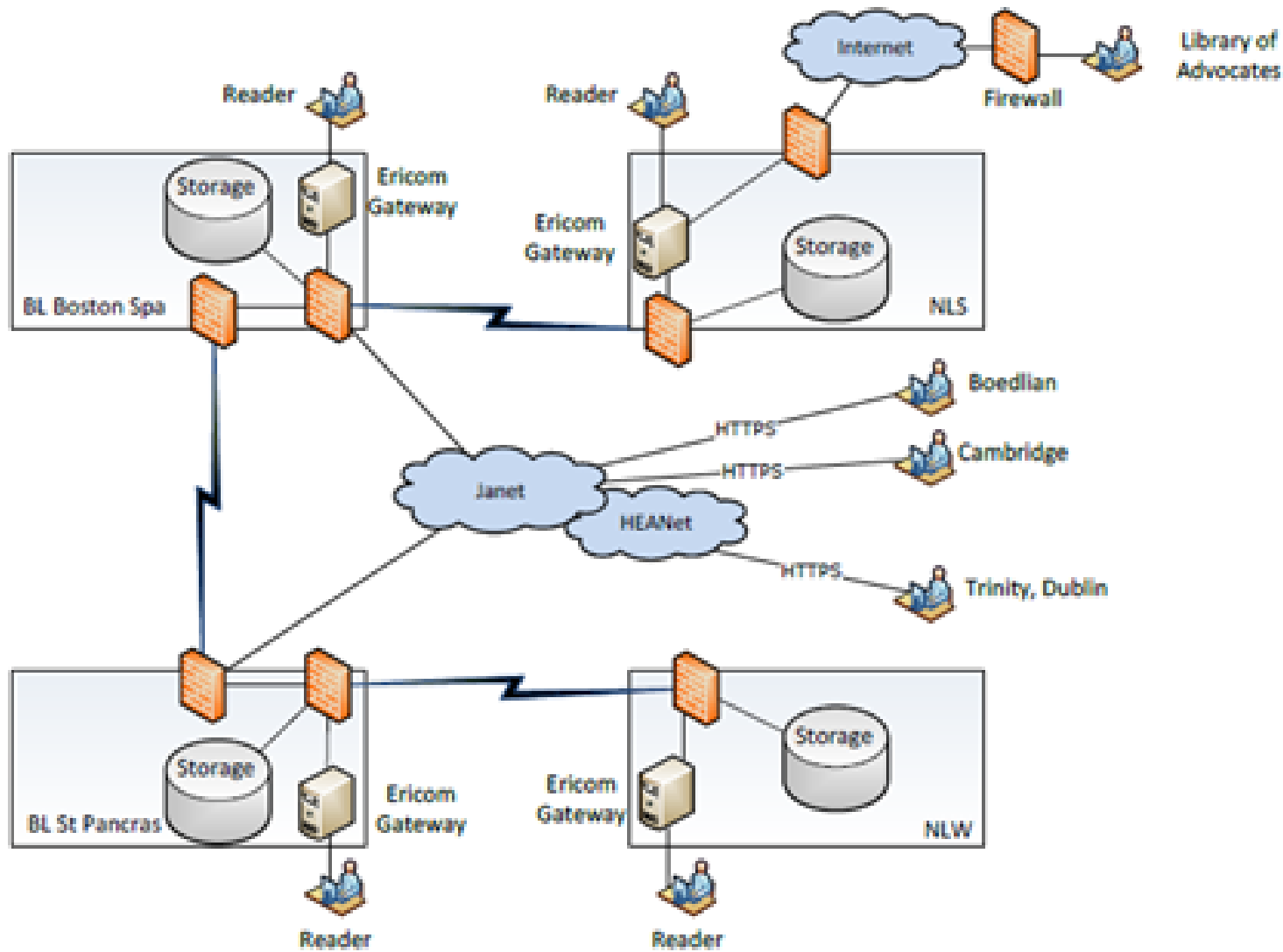
Content shared and distributed to four nodes:

- Boston Spa
- St Pancras
- Aberystwyth
- Edinburgh

Access at each node, and by secure network for

- CUL
- Bodleian
- TCD

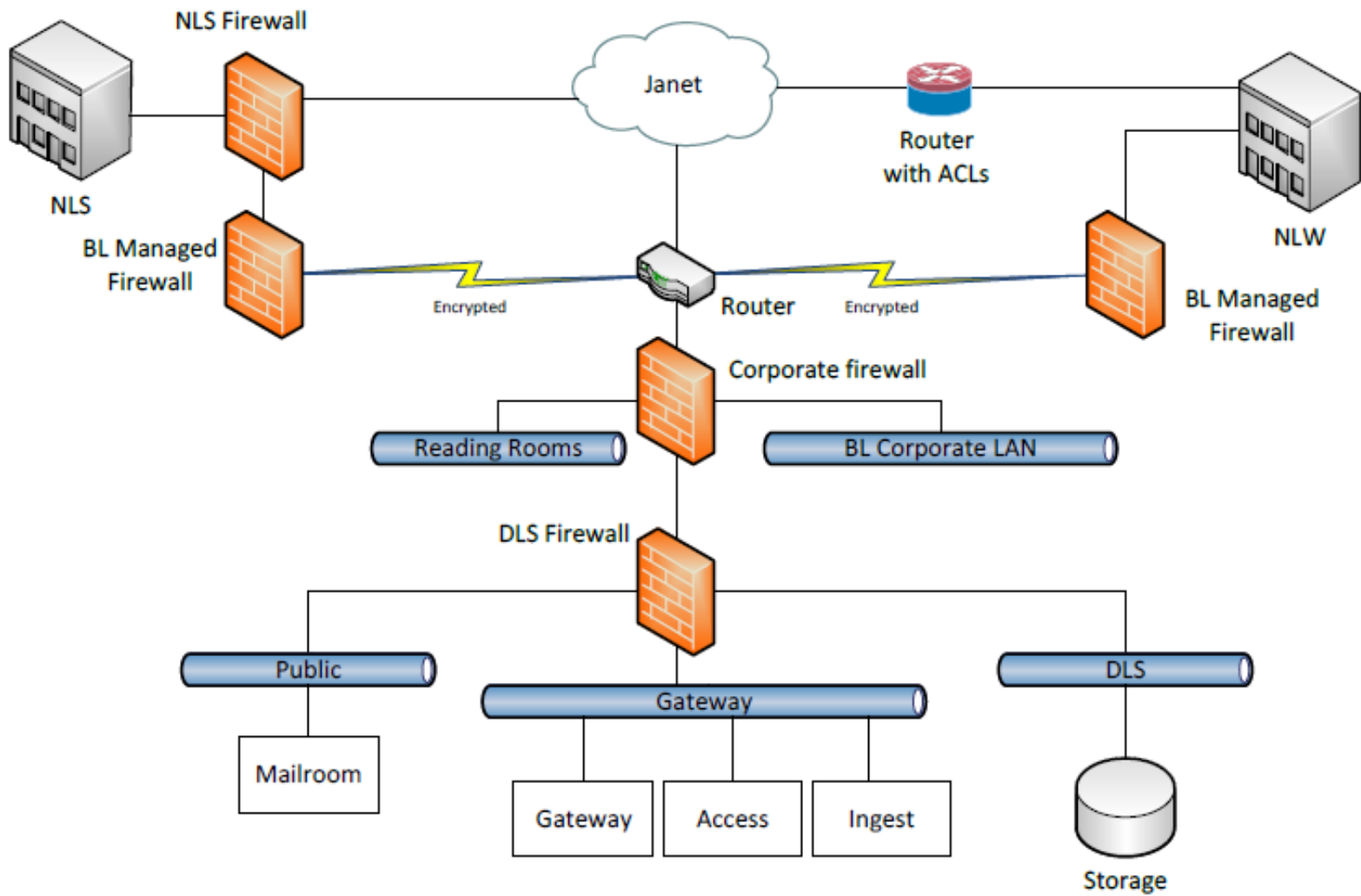




# Security and of the content

- Well defined security policies open to audit
- Shared infrastructure is protected against unauthorised access and other security risks
- Controlled access to each library's network
- All IT and security audits are reported to the relevant Governance body







# Success so far

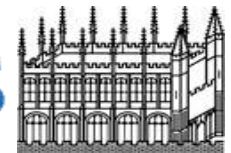


140K eBooks

150TB of Archived  
Web growing at  
60TB per year



2.5 Million  
eJournal articles



# What next?

Non-standard formats.  
Including digital mapping and born digital  
sheet music; emerging formats



# Review of the Regulations





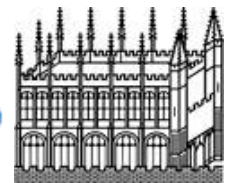
# Issues identified

- Metadata from publishers is not consistent leading to a lot of internal development.
- The sheer scale of ingest causes problems
- Six very different libraries with different needs
- User education
- Web archive restrictions limit its usefulness
- Potential loss of print only material
- Difficulty identifying claims for journals
- 



# To conclude:

We haven't reached this yet but we have come a long way in a very short time



A meme featuring Yoda from Star Wars. He is shown from the chest up, looking directly at the camera with a slight, knowing smile. His hands are clasped in front of him. The background is dark and out of focus. The text 'ANY QUESTIONS' is written in large, white, bold, sans-serif capital letters with a black outline, positioned at the top of the image.

**ANY QUESTIONS**

**DO YOU HAVE?**